

Calibration of 5E-CHN2200

1. Create a new method

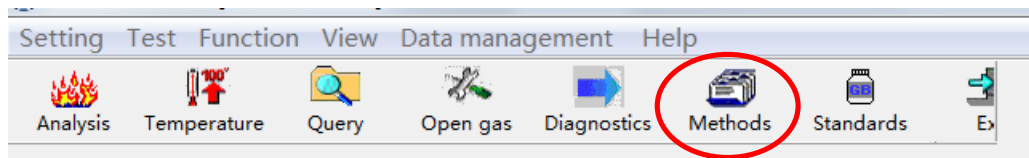


Figure 1

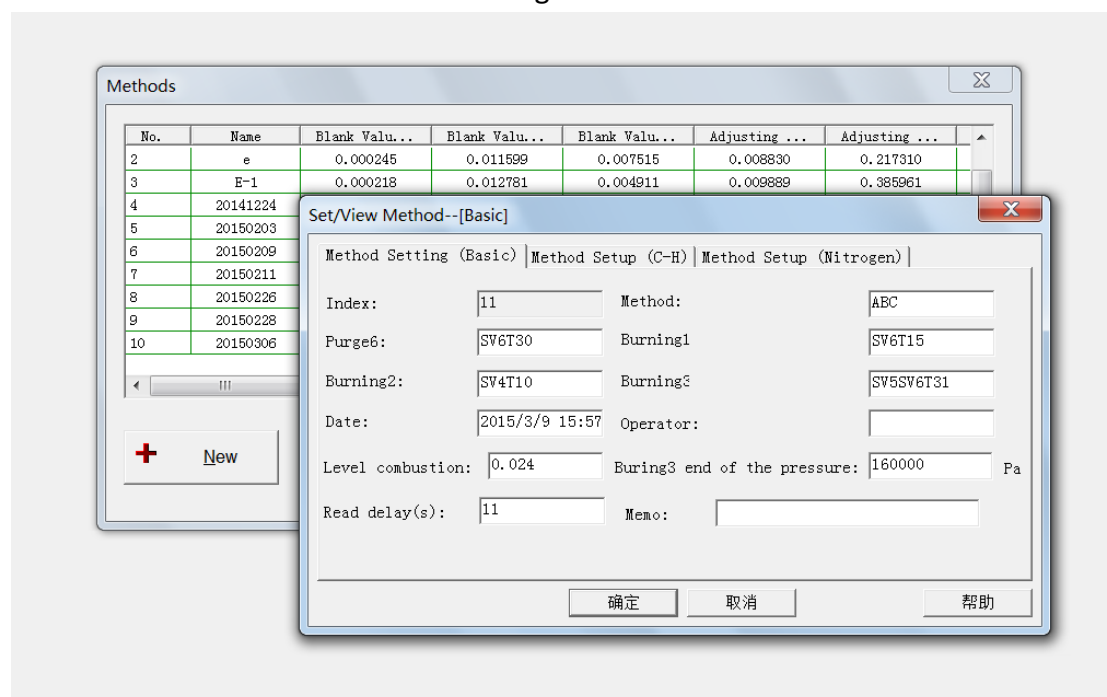


Figure 2

2. Define standard sample

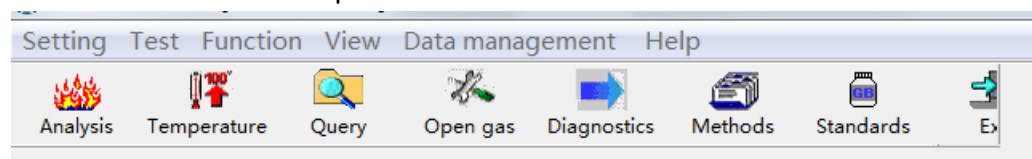


Figure 3

Here , for standard , you must set the type as “Standard”, blank as “Blank” and waste as “Waste”. The value of C/H/N is dry basis value , you can get from certification of CRM.

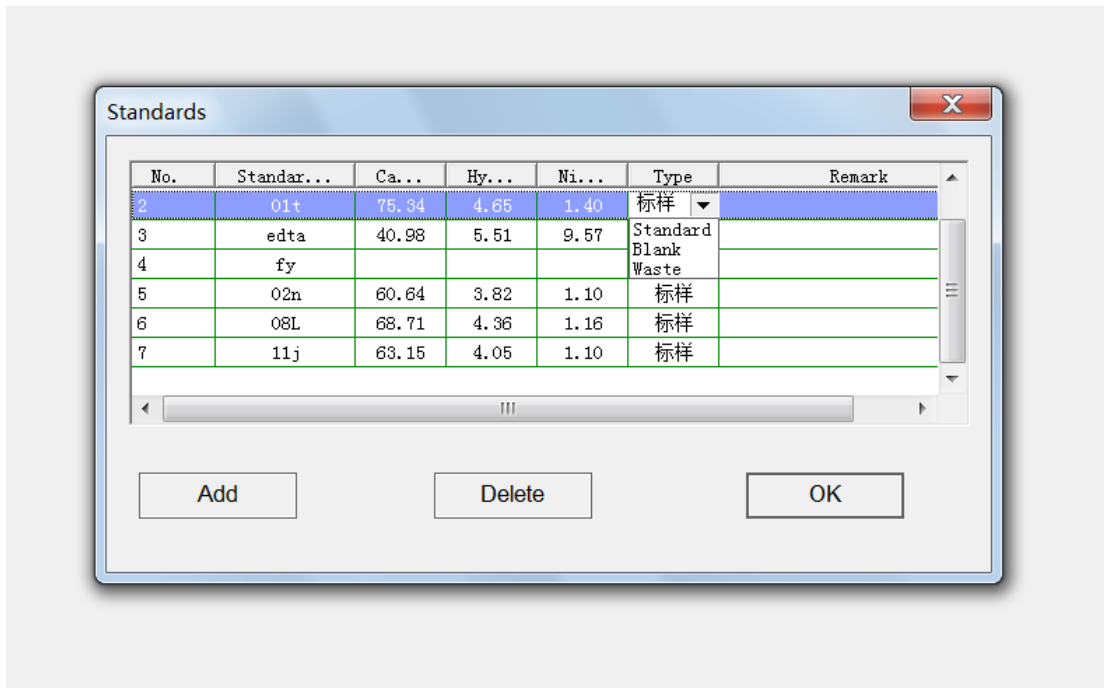


Figure 4

3. Analyzing

When the TCD voltage is stable (about 2 hours since you start heating), analyze the samples (the order is blank(5~8)----waste(1~2)----standard sample(12~15)).

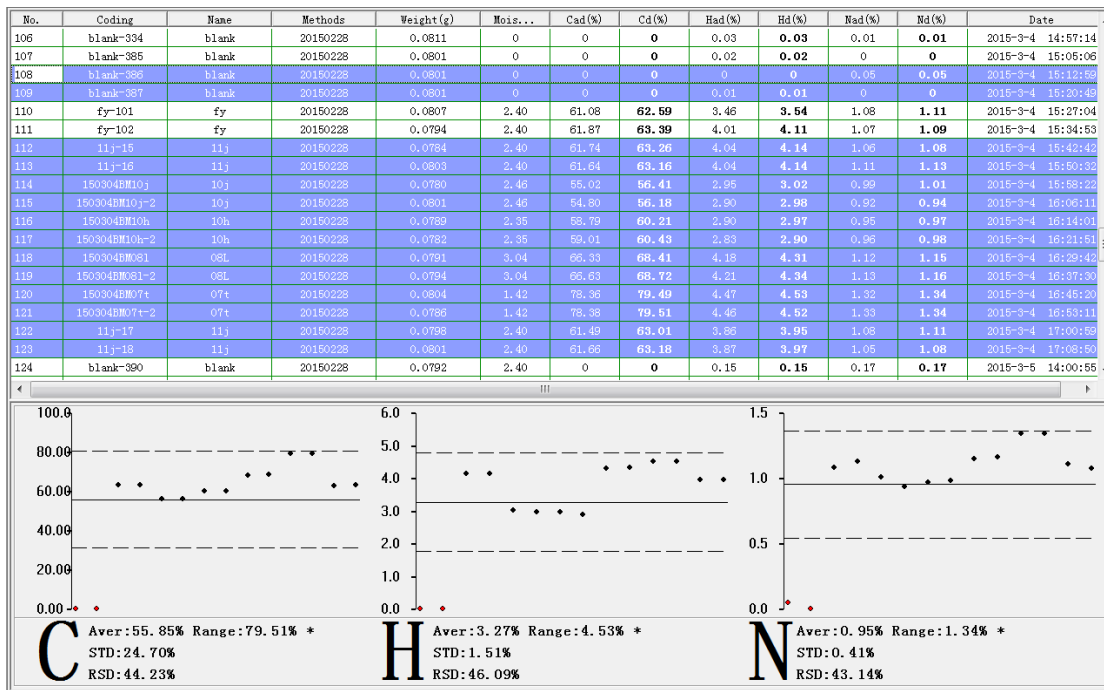
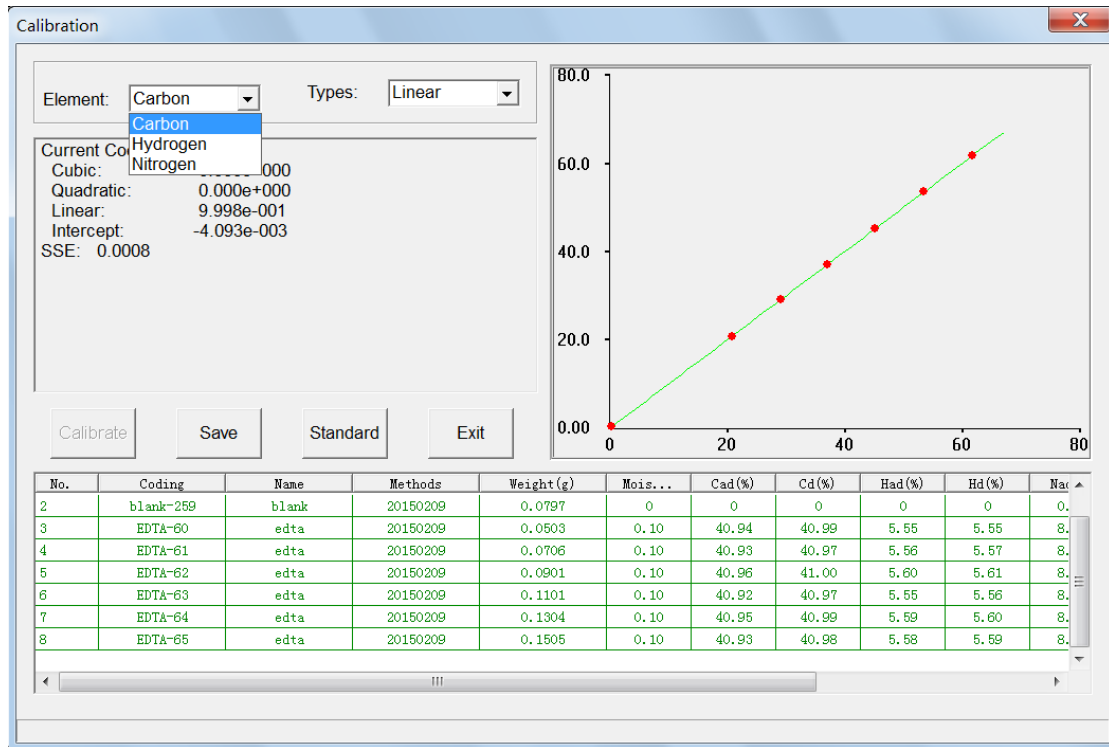


Figure 5

4. Calibrating

Choose 1~2 blank and all the standard samples ,Click "Calibration" , you can choose linear , quadric and cubic for Carbon , Hydrogen and Nitrogen .(Here we choose EDTA as an example)



5. Verifying

Using another kind of standard CRM to do the verification , make sure the repeatability and accuracy are both ok