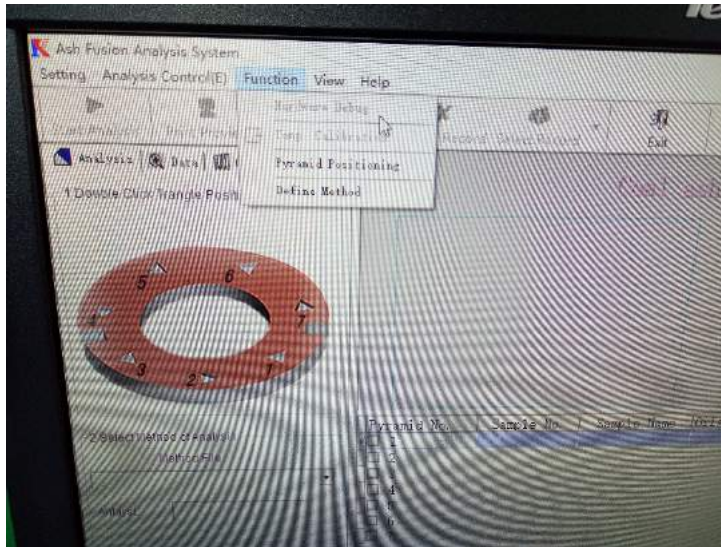


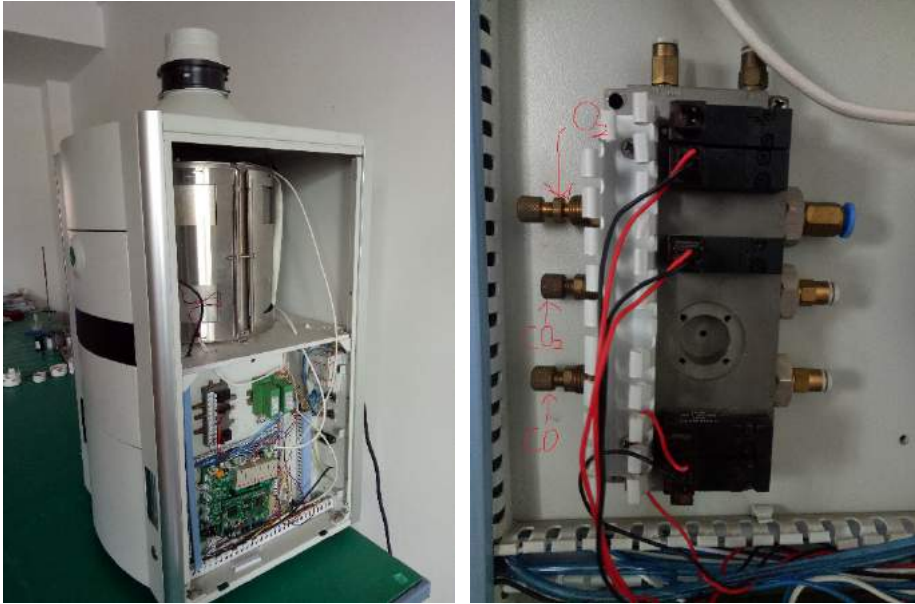
How to install the separate gas circuit for 5E-AF4105

1. Please connect the CO and CO₂ gas bottle with the machine, the inlet tube size is 1/8. The outlet tube size is 1/4. We have provided the enough tube with the machine. You can find it in the spare parts box.
2. Please open the gas bottle, turn on the computer and 5E-AF4105 machine, and make sure communicate with the computer and the machine.
3. Software---Function---Hardare Debug. Then we can see some valve, then open the reducing gas valve and inert gas valve in the software, so that we can see the flowmeter (in front of machine) that has pass through the gas.



4. Open the right cover of the machine, we can see the gas circuit and gas flow controller. Then we can control the gas flow by controller and get the flow by flowmeter. Please adjust the CO and CO₂ gas rate suit for standard.





5. Close the gas valve in the software.